

CONNECTION OF CERAMIC BLOCKS IN THE RAVNE TUNNELS WITH HUMAN ORGANS

By: Dr. Sam Osmanagich

Mega-ceramic blocks in Underground Tunnels Ravne in Visoko, Bosnia-Herzegovina, have been already a long-standing attraction. Many people heard of 'Egg shaped block', or 'K-1', the famous 'K-2', huge 'K-5' and others.

By capturing energy phenomena, it is determined that specific frequencies of electromagnetism and ultrasound, beneficial for human health, are generated around them. Also, it has been established that these blocks are regularly located above underground water flows, neutralizing harmful geopathogenic radiation.

Several medical doctors have drawn attention to the fact that the shape of individual ceramic blocks fully corresponds to individual organs in the human body.

Thus, for example, the block K-1, could be reminiscent of the liver shape in humans. The liver is the largest indigenous organ in humans. It has a central role in metabolism. Due to a number of necessary life functions it is also called a 'chemical factory'.



Mega-ceramic block K-1, a mass of four tons, resembles a liver



Location and shape of the liver in the human body

A small egg-shaped block, 60 meters from the tunnel entrance, attracts a lot of attention with its appearance. Anatomically, it resembles the heart in man. The heart is the only motor power that drives blood.



A small block of 350 kg to the left

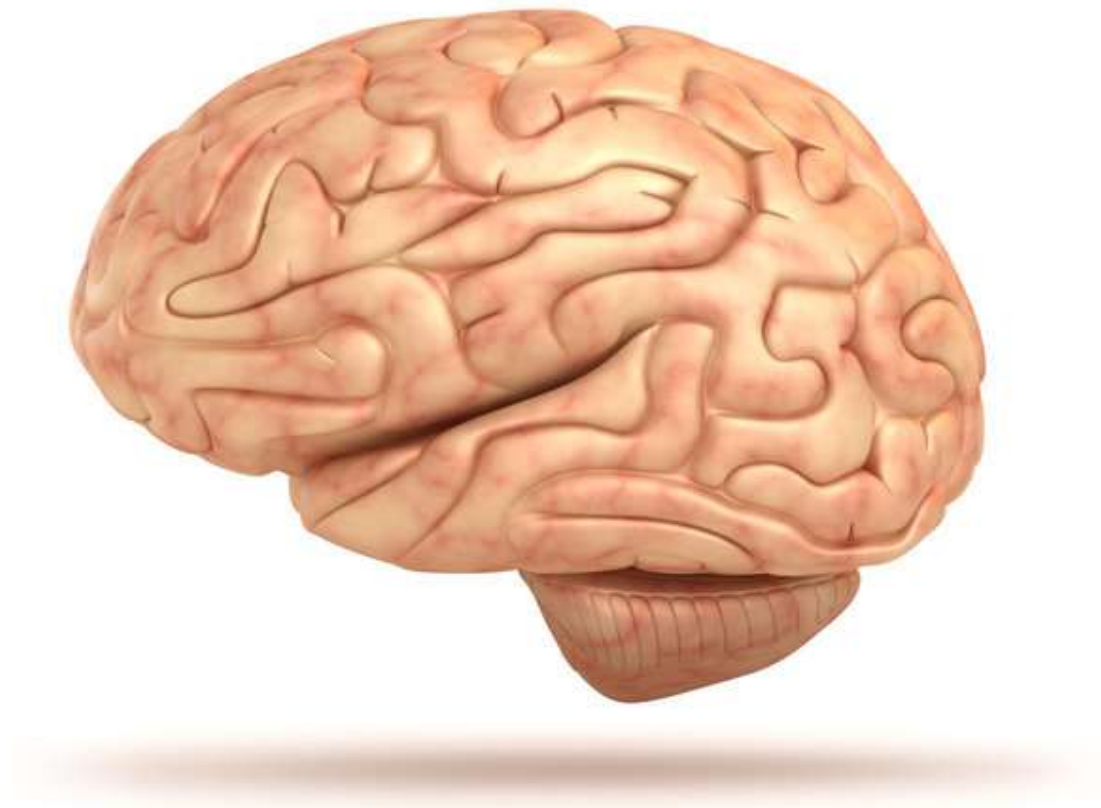


Human heart

The only block that is not of artificial ceramic origin, which is especially emphasized at the entrance to the prehistoric underground labyrinth of Ravne, is a stone with numerous grooves and lines. It resembles the human brain. As is known, the brain is the most complex human organ. Brain is a biological computer that manages all the most important processes in humans.



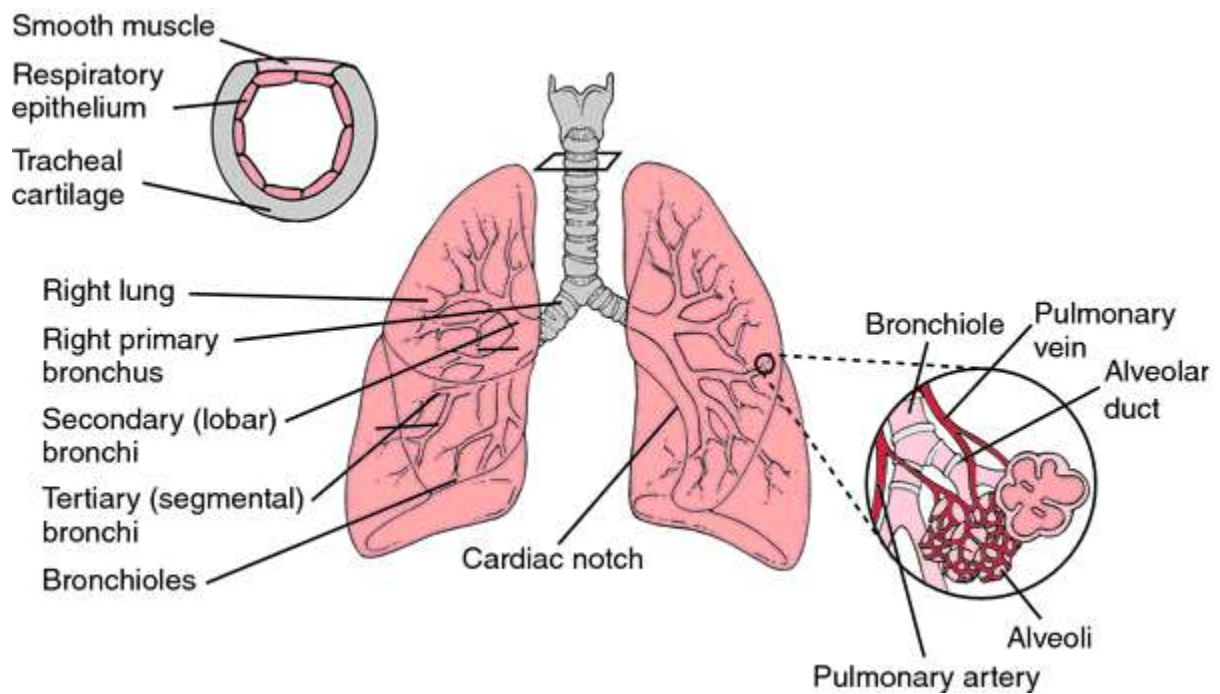
The stone at the entrance to the tunnels looks like anatomy of the brain



Alongside the egg-shaped block, there are two more ceramic blocks. One of them is reminiscent of the lungs. The lungs are the most important respiratory system. They transfer oxygen from the atmosphere into the bloodstream. The breathing process keeps us alive.



An elongated ceramic block that resembles a lung's wing

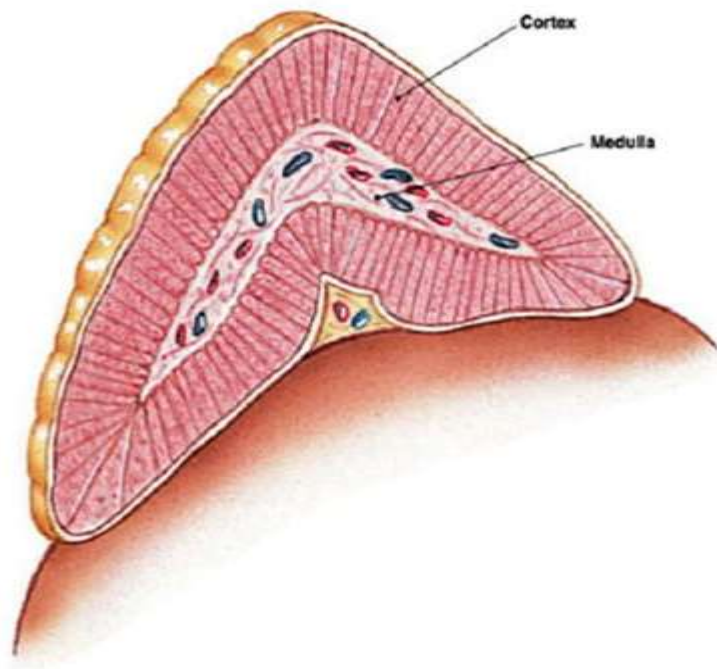


Lungs in humans

The third block has a triangular shape. Among the human organs of this form is the adrenal gland. Adrenal glands are known as 'hormones that preserve life'. They regulate the transport of minerals and water, carbohydrates, proteins and lipids, estrogens and hormones, causing adrenaline.



Triangular ceramic block



The human gastric gland

The topmost ceramic block in tunnels is certainly 'K-2'. His characteristic form could be compared with several human organs, including the intestinal system. The intestines are 'other brain'. Awareness from the depth of the intestine or intuition, causes tiny sparks, electricity in the intestines. Pure intestines mean perfect health.



Mega-ceramic block K-2



Crimping system in man

If these blocks are designed specifically to match human organs, does this mean that keeping them in mind is an opportunity for the organism to feel the frequency that can help restore the disorders of human organs to the original balance?

The underground labyrinth of Ravne will raise more questions for a long time than we will receive an answers. Therefore, a multidisciplinary scientific method is the best way to reasonably answer all inquiries.