

BUILDING THE EGYPTIAN PYRAMIDS

Chapter 13 –

From the book **“FORGOTTEN GENESIS”**

Discover the history of your DNA

by Radu Cinamar



The ancient history of humanity is exposed in this fascinating work that reveals the mysteries of how multiple extraterrestrial civilizations have influenced and directed humanity's DNA to evolve to a higher state.

In this exciting description of ancient mysteries, "Forgotten Genesis" presents an amazing setting with more than elaborate drawings that make the text easier to understand.

The core of this work refers to the true origin of man and his complex evolution over the millennia. Some of the "critical points" of human history, which have remained unknown or have only been considered from mythological positions, explain among them: such as Atlantis, Troy, Shambhala, Hyperborea and Egypt. The diversity and precision of the explanations indicated are clear and conclusive, combining pure esoteric knowledge with certain scientific elements. Special emphasis is placed on the existence and manifestation of

interdimensional abysses or portals at the "intersections" between the physical plane and the etheric plane.

“FORGOTTEN GENESIS” delves into ancient history in a way that no book has ever done before, explaining and illustrating the changes in DNA that have taken place over millennia and how humanity has evolved into what it is today.

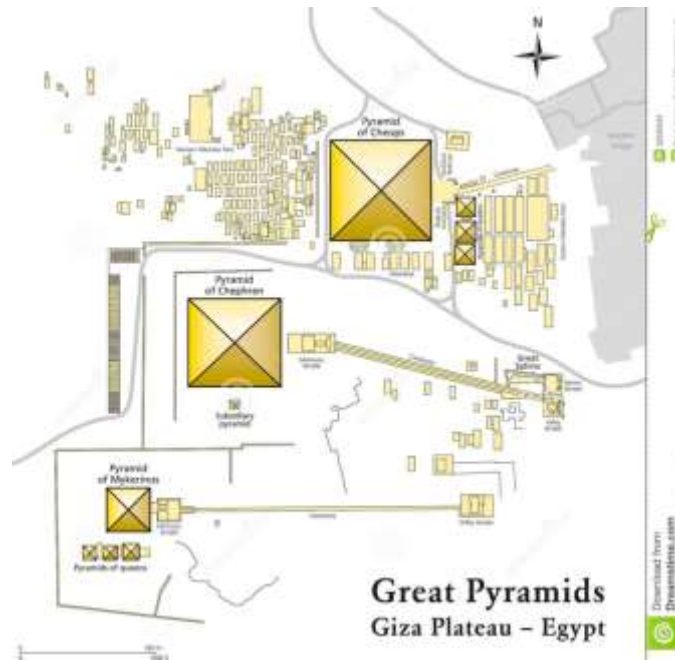
This information is directly connected and comes from the Akashic records, which was provided to the author through a benevolent alien race from "Apellos" and who have a base on earth to which the author himself was invited.

This insight was facilitated through a sophisticated visual eyepiece that connects to the cerebral cortex and the author's intuition, resulting in images in the form of "holographic projections" seen in the center of a room and telling a compelling story of the ancient origins of humanity and its hope for the future.

This last book by the well-known Romanian author Radu Cinamar, like all his seven previous works I read over the years, his best known works so far are from the series of the discovery of the Bucegi Mountain in Transylvania, Romania, “Transilvanian Sunrise” etc. about which I have already presented a conference in Barcelona and you can find them on YouTube, filmed by “Mindalia TV”, but which unfortunately I just saw that they have been deleted.

I have transcribed this 37-page text from Chapter 13 from the English version “FORGOTTEN GENESIS” by Sky Books, edited by Peter Moon, to be able to share it with you since it gives us many answers to a topic that interests many of us. In this chapter I was especially interested in the topic of "how the famous three Pyramids were actually built on the Giza plateau in Egypt." We can also imagine that the Bosnian pyramids were also built in the same way, but as we already know, they are much older than those in Egypt.

Prepare yourself for nothing less than a science fiction trip to a past in the history of humanity hitherto unknown by most human beings on this planet, told through the words of the same author.



BUILDING THE EGYPTIAN PYRAMIDS

Controversies over the age of the pyramids on the Giza plateau near Cairo are almost meaningless. Any man with some good sense and intelligence, as well as a minimum knowledge, can realize that the "classic" rant that attributes the great pyramids in Egypt to be approximately 4,500 years old, supported by contemporary archeologists and Egyptologists, is hilarious. To this is added the stupid idea that these colossal buildings were but to hold the grave for the pharaoh who lived during the period in which they were erected.

THE TRUE AGE OF THE PYRAMIDS IN EGYPT

Regarding, this one fact is certain. The way the three pyramids were built has absolutely nothing to do with the present "academic vision". No person with a certain culture and intelligence could possibly swallow the version agreed upon by some Egyptologists and contemporary archeologists about the origin of the pyramids and even less that of the Sphinx, all of which is totally hidden from modern science. There are so many question marks unresolved issues, and mysterious elements in connection with these grand constructions that they do not even deserve to be mentioned here.

This “drama” of hidden truth, often ridiculous in the daring way it is supported by today’s science, has its roots in the inability of historians, archeologists and Egyptologists to believe that the history of Mankind might be different from the way it is generally presented to the whole world. For example, huge portions of this history, such as the existence of Atlantis and its demise, are excluded on the grounds that they can only be “legends”. The “Episode of Atlantis” in the history of Mankind, however, was one of the most important because the disappearance of the great island has radically influenced the situation of humanity and even of the entire planet. To this was added the withdrawal of the land of Shambhala into the etheric plane about 27,500 years ago. The disappearance of these two essential poles of knowledge and evolution of life on Earth has dramatically influenced the course of humanity’s development.

We can talk about a lot of counter arguments and elements that demonstrate the falsity of the “orthodox” ideas about the antiquity of the Egyptian pyramids and how they were built, but I do not think it is necessary to present them here. The interested reader can, with a minimum of research, discover such for himself and then be amused by the naivety and superficiality of the opinions expressed by a certain “arena” of scientists.

Interestingly, many people with certain qualities of extra-sensory perception and special endowments have mentioned something other than the tacitly accepted scientific version about these extraordinary constructions. Some of the elements that have been described by these authors correspond to the reality of the akashic records to which I had access, but others are presented incorrectly or are omitted.

There is even a consensus among those who admit that the pyramids are something other than what is commonly stated. This is the idea that the pyramids were built by an alien civilization, and this is not far from the truth. Rather than explanations or accounts of who built them or how they were built, there are, generally speaking, many more mysteries than have been observed in relation to the great pyramids built in different regions of the Earth. The explanations of this nature are often a mixture of truth and imagination, but there is also a special category of them coming from Egyptologists, archeologists and scientists in which they are completely wrong.

If we refer to the architectural complex near Cairo, but especially to the Great Pyramid, the correct dating of the construction is about 13,500 years ago. It was not too difficult to find this “age” from the “interplay” of frequencies, especially since I already had some experience in this direction. I did notice, however, a “movement” of information, a kind of “agitation” for that period, and it was something that initially confused me a little. The announcement of the actual age of the pyramids is not new as many authors and clairvoyants have already mentioned this. (Mathias di Stefano)

Therefore, for those who are concerned, the opinion of contemporary Egyptologist and archeologists has nothing to do with reality. Moreover, their entire conception of what the pyramids mean, who built them, and especially how they were erected is completely wrong. Both the images I saw and the calculations resulting from the frequencies I was perceiving showed me as clearly as possible that the three pyramids on the Giza plateau were built immediately after the sinking of Atlantis, approximately 13,500 years ago.

INVASION OF THE REPTILIAN RACE IN OUR SOLAR SYSTEM

The age of the architectural complex near Cairo did not surprise me because I had known for a long time that it could not be “recent”. The real surprise, however, came when the pictures showed me the fact, the construction of the pyramids on our planet started about 100,000 years ago. That context deserves a brief presentation as it offers a broader and more relevant insight into how the pyramids were erected on Earth and its true builders, as well as the main motivation which determined the accomplishment of those colossal constructions. I came to see and understand these issues because I focused on the construction of the pyramids. Already knowing that the three pyramids on the Giza plateau near Cairo were by no means the first pyramids built on our planet, I wanted to know what it was that determined the construction of these colossal buildings with science and precision that is today unmatched.

At first it was suggested to me by pictures that the construction of the pyramids on Earth became a necessity at one point. I have thus seen the fragmented

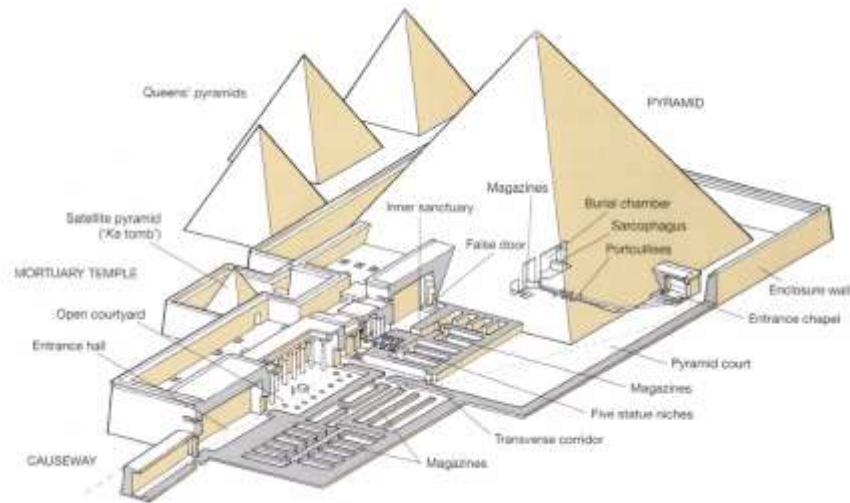
initiation of such constructions at different points around the globe and schematic links between them and cosmic space. I was viewing certain directions, symbols and geometric shapes that I could not understand.

Then, in a logical sequence, the images showed the constitution of an extraterrestrial being with reptilian features. It was a quick and complete presentation from many angles with lots of data and adjacent symbols, all of which were highly dynamic within the hologram. The content of the image then changed, showing me brief but precise snapshots of several types of cosmic vessels which were generally elongated. One of the types, however, had the round classic shape of the Ufo's presented in literature.

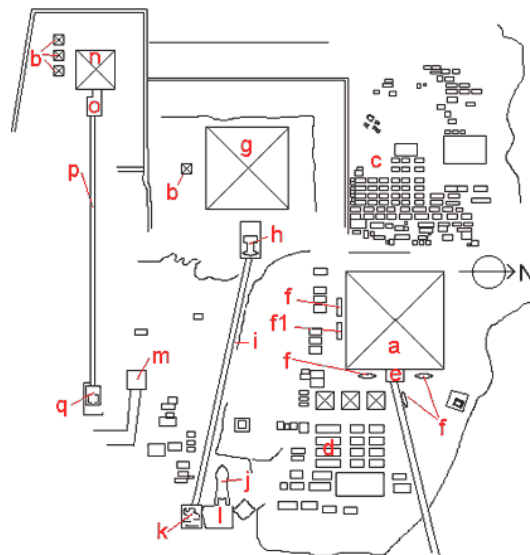
The hologram then "split" in the sense that the image of the reptilian being appeared on the lower left corner of the hologram, and the rest was filled with the image of a huge fleet of shapes similar to the ones mentioned above, plus others that were much larger in size. The images were very dynamic, zooming in and out, depending upon the ideas wanted to be highlighted. The displacement of the fleet was attached to the image of our Solar System which I was able to recognize, especially due to the images of the planet Saturn and the red spot on Jupiter.

It seemed to me that, in this simple way, the reptilians were moving with their cosmic fleet to our Solar System. The feeling and emotion felt at that visual impact was scary because it was not only a simple visualization, but also a connection with the state of the moment and the respective context. In the face of the threat, the most important and evolved alien civilizations from the Galactic Alliance who were overseeing the plan for the genetic evolution of the human being on Earth decided to defend our planet and the project on which they had worked thus far. I was amazed to see from the synthesis of the images that, even in this radical action, the advanced extraterrestrial civilizations that had the responsibility for the "laboratory" on our planet acted in such a way that human beings could continue to evolve, even under those conditions. To this end, the original Sirians decided to introduce an advanced technology on Earth that would counteract the reptilian assault.

THE TECHNOLOGY OF THE GREAT RESONATORS



As I witnessed, these events that followed in synthesis on the holographic screen happened approximately 100,000 – 108,000 years ago. At that time E-N-L beings were in full bloom to access to Sirian technology and advanced extraterrestrial civilizations that once lived on Earth was easier due to the fact that the E-N-L branch already had a refined level of consciousness and understanding.



The technology of the great resonators referred to the construction of enormous buildings at various points around the globe designed to serve as “subtle high energy” headlights which had the capacity to gradually induce important changes in the DNA of human beings through their resonance with those energies. At the moment I understood and appreciated the idea, but then I asked myself: ”Why did the Sirians or even the Alliance they

formed with other advanced extraterrestrial civilizations not “forbid” the reptilians here on Earth or even in the galaxy to do all the evil that they do?” I thought that would not have been a too difficult task for them.

Then, in a very cleverly grouped flashing of images, I realized that, even though the involvement of the evil reptilians was terrible, the role they played in all of those events served a global purpose. **I was thus shown that their intervention was, in fact, a necessity because it lead, in the end, to a “specialized design” of the DNA of the human being that was so hard wired to the physical plane that it provided the possibility of incarnating a large number of beings from the astral plane into this plane, all of whom otherwise would not have had the necessary facilities to be born into higher level physical bodies.**

I therefore understood that the plan of creating a human being with a very complex DNA embraced the consideration of creating, among other things, greater possibilities for certain souls in the astral plane to evolve through incarnations because of their need to understand the meaning of experiences and bring them to fruition according to individual karma. This could only be done by incarnations into physical bodies with very “specialized” frequencies that are very “concrete” body, which would have given them the opportunity to go through certain situations of existential crisis so that they would understand the need to correct the way they conduct their existence.

The fact that the human DNA was very “specialized” and “separated” on many different branches and directions of development and evolution also contributed to the birth of a diversity of souls and entities from the astral plane, all corresponding to a wide range of frequencies of vibrations, and that is why humanity began to appear as a “multicolored fan” of such frequencies and tendencies which caused it to be called a “nursery”.

On the other hand, **the reptilians** could not control the entire population of the planet but rather only those beings that resonated with them which had in their DNA, at least to some extent, the specific reptilian influence and energy. Some of these influences were harsher, and the respective beings became their acolytes. Other influences were less harsh but were accompanied by an intense struggle for the total subordination of those beings. In fact, the reptilians wanted

to suppress the rest of the population thus conquering the entire planet. They had a rather advanced technological level and so **created a “mental network of lower frequencies” as a kind of cage, that could influence, to a certain extent, even the beings that did not resonate with them. This is still true nowadays but with certain modification.** By allowing for the introduction to the technologies of the great resonators, i.e. the gigantic constructions on Earth, the Alliance gave a new impulse and concrete help to human beings, both to evolve and to use those buildings for defense purposes. The great resonators are in their vast majority, the pyramids and ziggurats that we can still admire today in precise aligned areas of the Earth.

The accomplishment of these extraordinary constructions was also an extra boost for the spiritual future of Mankind because, after the withdrawal of Shambhala and the sinking of Atlantis, there had to be centers on the surface of the planet to support, to some extent, the light and spirituality of the past.

Even then, however, the pyramids were built during much older periods of Mankind, primarily because the need to keep in close contact with the “gods”, that is to say, with the extraterrestrial civilizations that played a decisive role in the evolution of DNA of the human race on Earth. In the case of such gigantic constructions, this was possible because, **in reality, the pyramids are very powerful telepathic transmitters of subtle energy and information.**

Second, their construction became necessary in those times because the pyramids constantly create a refinement of the subtle emotional energies of human beings. This was of great help, especially in that ancient context, in which tensions and wars had reached high levels due to the adverse influence of evil reptilians. Therefore, the aggregate of human beings and their specific mental field had to be sustained and helped to evolve further, and that is why one of the main methods to achieve this was to introduce the technology and knowledge of the extremely elaborate and difficult construction of the pyramids which serve as great resonators of beneficial energies in the Universe.

THE COMPLEX ROLE OF PYRAMIDS

Over the course of tens of thousands of years, the purpose of building the pyramids has not changed so that, even in times close to us, that is, after the fall

of Atlantis, they played the same fundamental role. Moreover, I was shown that the high priests and pharaohs of those times knew that the immense energy of the pyramids could be used to facilitate the conscious etheric or astral travel of their subtle bodies across very large distances in the galaxy, to the “gods” they worshipped.

Such megalithic buildings, however, were not just a conglomerate of stones, regardless of how complexly arranged they were. The name of “**great resonators**” is justified by the fact that inside of them were certain rooms designed with colors in which were arranged various devices of great complexity, based mainly on the technology of crystals. In pictures, I was shown as “eloquently” as possible the interiors of such rooms, which are actually control rooms, sometimes being located at either the top or bottom of the pyramid.

By the characteristic shape, the pyramids are extraordinarily powerful subtle energy amplifiers so that the subtle energies emitted by the sophisticated devices and crystals inside of them were greatly amplified and transmitted into space to a well-defined target. On the other hand, the pyramids also had the role of supporting beneficial frequencies over a large area around them so that human beings would not decline under the influence of hostile external factors.

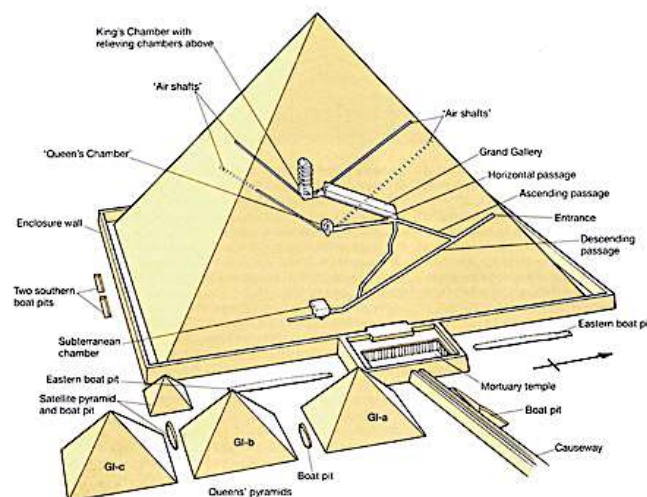
After strengthening the Alliance of beneficial extraterrestrial civilizations and allowing the Sirians to introduce this technology on Earth, the construction of the great pyramids began. The extraterrestrial civilizations that were part of the Alliance and had a territory on our planet realized a coherent and correlated plan to erect these buildings, respecting the subtle energetic influences of the Earth. This included the significant areas of intersection of its magnetic fluxes as well as correspondence with certain areas of the galaxy. These megalithic constructions were not performed randomly but only at certain precise points on the surface of the planet. Although the general shape of the pyramids is the same, they still have their own characteristics, all dependent upon the area in which they were built, the nature of the DNA of the human beings in that area, and the particularities of the extraterrestrial civilization considered to be the “governor” of that territory. For example, I was shown that the pyramids in Atlantis were very complex because they encompassed the knowledge and style of several alien civilizations.

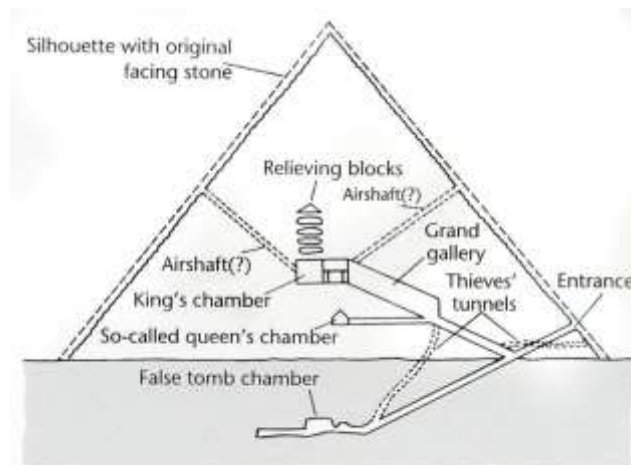
Later, after the great continent sunk, the pyramids that were built in different areas of the globe reflected the style of only one of those extraterrestrial civilizations. For example, the three pyramids on the Giza plateau are specific to the original Sirians in the Sirius A system even though, in reality they were built on the physical plane through the participation of a Sirian civilization derived from the original one and located in Orion's Belt.

The pyramids in Central America, the stepped ones, also have the direct imprint of the Sirian civilizations in the Orion Belt. Things here, however, are a bit more complicated due to the intervention of the reptilians and their acolytes. I saw that the Aztecs went through successive phases. First, there was an initial phase in which their resonance was "healthy" and pure; and then, a second phase in which they were "altered" by the nefarious influence of the "little grays", a degenerative civilization formerly taken over by the reptilian civilization. This converted the actual purpose of the pyramids to be dedicated towards evil.

On the other hand, temples in India, which are somewhat smaller in size but resemble the pyramids, though they are narrower at the base and more "pursed" at the top, have a Pleiadian descent. As far as I could tell, the many details, inlays and rounding in their construction present something specific to the Pleiadian civilization. I also recognized this feature in the Pleiadian ships that I saw in the holographic projections.

DESIGN OF THE GREAT PYRAMIDS





3.20 Section of the Great Pyramid of Khufu, Giza.

Looking at the comparative analysis offered to me on the holographic screen, I was keen to see how a great pyramid was conceived and erected, as well as the exceptional technological solution employed to achieve such a construction. Obviously, I did not expect to see something like the design on a board with a ruler, compass and pencil, nor even on the screen of a computer using various specialized programs for it. I was however, very passionate about the process of thinking up and designing the project, especially from the point of view of the advanced technology of an extraterrestrial civilization, because I did not imagine that such a grandiose and incredibly sophisticated project, such as the design of a large pyramid, is something common and easy to do. Proof of this is the fact that, despite the level of knowledge and technological possibilities that scientists and engineers have today, they cannot design and erect such a gigantic construction, the difficulties of design and especially of concrete materialization would appear to be insurmountable for them.

As soon as I expressed that desire, the line of synthetic analysis was interrupted, and I was shown a map of southern Egypt. [The image then changed suddenly, and I saw a group of six beings, four of them extraterrestrial and two earthly, gathered in a large room that was possibly inside a ship. I knew here of the four extraterrestrial beings were Sirians because I recognized them by their high stature of more than two and a half meters, the whitish flesh color of the skin and the slightly extended skull towards the back. The fourth extraterrestrial being was belonged to a race unknown to me, having very white skin, solver hair and purple eyes. As I telepathically perceived, the two earthly beings came](#)

from Atlantis. Everybody was standing around a huge blue hologram which looked like a pyramid in the middle of that hall. The hologram was covered with “milky” light, and the edges of the pyramid gleamed discreetly in white.

Each being in that room intervened by hand movements inside the hologram, modifying or adding elements. At the same time, I saw a lot of information on the edge of the hologram: symbols, shapes and sequential representation that moved and changed continuously. Everything was dynamic, active and full of meaning and coherence. I felt beyond any doubt that what I saw, as a synthesis of the design of a large pyramid, was a very deep work based on cosmic laws and principles, having only peripherally to do with the calculations of its physical construction. As I would soon understand, these calculations resulted directly from the subtle structure of the pyramid, and that is why they were perfect: because the construction of the edifice was not limited to its physical elements and the correct integration into a much larger cosmic structure.

If we consider them in principle, these conclusions are very important because they show us the erroneous basis that scientists rely on when they want to understand the mysteries of the pyramids. Among other things, it is difficult to assume and believe that people from the Neolithic Age, about 4,500 years ago per Egyptologists, designed, drew up plans, coordinated and then completed the construction of such colossal buildings. Engineers and contemporary physicists, however, are not able to do so today, even with the help of advanced computers and modern construction technologies.

They have not yet understood the fact that there is a well-defined sensibility of handling things in terms of Creation, a realm or reference point where things always come from the top down. The calculations, results and measurements in the physical plane, which helped to build the pyramid, naturally derive from its higher design in the subtle etheric plane because what I saw synthesized in the image of the hologram was actually the design of the pyramid starting from the etheric plane. So it was not just a simple hologram; but, by a technology that I do not understand even now, it allowed the vision of the pyramid and its design coming directly from the etheric plane.

In this phase, the pyramid gains meaning and “inner force”, but it is not yet related to the physical plane. All calculations and results from this plane are just

a natural consequence of structures designed at the etheric level. Perhaps that is why contemporary architects and engineers have not yet had the knowledge of such an advanced project like the construction of a large pyramid. At this level of complexity, only the calculations of strengths and structure are sufficient, but it is necessary for there to be a correlation with a deep energy base which gives the project stability and durability. Solutions of a subtle nature are therefore needed as a starting point. They can then generate the concrete solutions in the physical plane.

MAJOR CONCEPTUAL DIFFERENCES

From the images presented to me, I realized that such a project starts from a kind of “**star astrology**”; that is to say, from a certain star configuration serving as a point of reference for the place where the pyramid is to be built. (such as Vedic Astrology)

At the high level of consciousness and understanding of the cosmic laws that advanced civilizations have, the problem of constructing grandiose buildings implies a different approach which is much deeper and more complex than the ones we are accustomed to on Earth, no matter how amazing these constructions might look.

The big problem with such earthly constructions, whether we are talking about large and sophisticated skyscrapers or other types of buildings, is their durability over time, which is small. A resistance of several hundred years would be a record for the constructions of modern era, assuming that they would not be subjected to weather or major destructive phenomena of nature. And yet, even with such inclement weather, which at times was harsh, the pyramids in Egypt have been around for over ten thousand years, and others are even much older near the beginning of the time when the technology of the great resonators was introduced. What buildings do we have on Earth which we can say will last for at least a thousand years? By the very nature of the building materials that are used, they are subject to perishability. Even though when they are new, they look imposing and beautiful, and the technologies used for interior design seem sophisticated. In reality, however, all of them are superficial and have a short life. The materials have no resistance in time, and 99% of the technology of it is

based upon electricity, the source of which may disappear or be suspended at any time.

However amazing today's technologies might seem; they are at an early stage of development because they have not passed an elementary stage in conception and thought. Most of them depend upon each other, and this weakens the cohesive force of the idea that underlies them. A major leap of conception in contemporary science has not yet been realized; rather, it has not yet been officially accepted on the "mass consumption table" of the population.

It is quite easy to raise skeletons from steel bars to make large buildings and to insulate them with different materials. But, if the largest construction company in the world were committed to designing and erecting a large pyramid only from stone blocks, such as the one in Egypt, it would most likely quit the job in just a few days. It would be great to have the technology necessary to assemble such a construction in a consistent manner, down to a millimeter fractions that is similar or identical to the Great Pyramid of Egypt, without having to talk about the design of the work involved.

But, how can contemporary architects and engineers design and build a similar colossus when they do not at present know or understand the construction of the Great Pyramid and its interior structure? **Further, the pyramid in Egypt is relatively small in size and complexity compared to that was once the Great Pyramid of Atlantis.**

The inability of the science of architecture and engineering in contemporary constructions comes from the fact that there is no superior understanding of what form, energy resonance and support in the subtle dimensions of Creation mean. A magnificent construction, such a large pyramid, implies an accumulation of interdisciplinary knowledge, and by this, I do not mean architecture, resistance of materials, installations, interior design, and so on. What I want to point out is that true science has a universal nature, and also implies, in addition to the laws, equations and norms that define it, a different kind of knowledge, such as the subtle energy relationships between celestial bodies, their mutual impact, the hidden significance of the resonances that develop in this way, the way they can be used over time, the deep science of

cosmic cycles, and other aspects that I have seen and understood from the fragments presented to me on the holographic screen.

Moreover, when designing such a construction, both the general macrocosmic elements, which ensure its stability and durability over time, as well as the microcosmic elements, highlighted by the resonance, are taken into account, specific to the space in which the construction takes place, the general resonance of the DNA of the race of beings that come into contact with it, but also other specific elements, such as the purpose of that construction.

Therefore, the physical pyramid is conceived in relation to all the main aspects of the being and the reality that surrounds it, but especially with those of a subtle nature: the specific resonance of the DNA, the psycho-mental states, the geographical location, the influence of the planetary and stellar energies, the purpose assigned to that construction, and so on.

SPECIFIC STAR CONFIGURATION



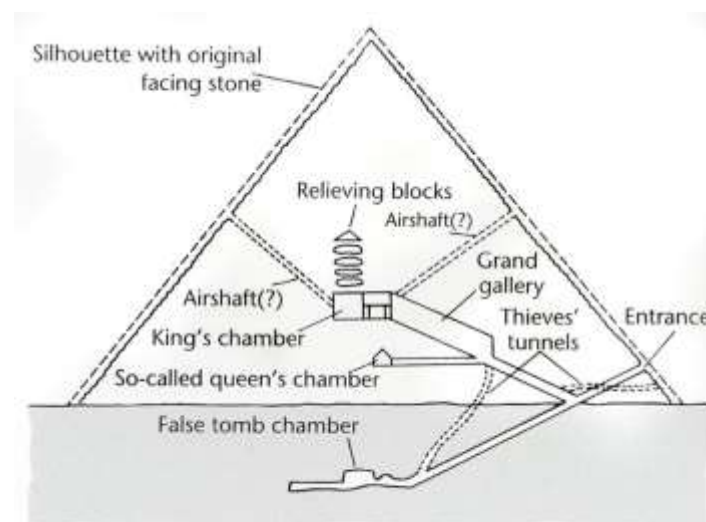
I saw how the design of the pyramid by those beings began with the analysis of the star map of the area of the galaxy where the Earth was. Various links were then made between several stars in order to find certain combinations that provided results of both a spatial nature (through the structure of the respective configuration) and a temporal nature (synchronized time periods and their precise duration).

At every move in the huge hologram or in the search for a star, a wealth of information appeared, attached on the edges. From what I saw, **I realized that**

the pyramids are of different types, having different shapes, different angles, being blunt or sharp, including four or more faces, stepped or smooth, and of course, serving different purposes. All of these characteristics were not accidental but correlated with the cosmic energetic influences of certain star configurations under the “patronage” to which a pyramid was to be built.

As I said, the pyramid is not just a simple material construction but encompasses a whole series of subtle correlated aspects, each of them having a certain vibrational frequency in affinity with a particular geographical area and with a particular psycho-mental state that is specific to it, etc.

After the extraterrestrial beings chose the stellar configuration, I saw an energetic “cloud” gradually began to form in the central area of that configuration, becoming more and more contoured based upon each new element of construction that was created or chosen by those beings. I then saw how lines were beginning to appear in the middle of the cloud, signifying a precise and quite complicated step. I quickly realized that this was the inside of the pyramid.



3.20 Section of the Great Pyramid of Khufu, Giza.

The technology that made it possible to achieve that design, which correlated very precisely with other elements, such as stellar energy influx, was amazing. Choosing the stellar configuration resulted in a complicated shape in the middle which represented the interior of the pyramid. The schematic structure was born simply from the agreement with the energetic resonances that were

manifested within the stellar configuration. Even more amazing than this was to observe that any stone block, any angle used, any space created and any size that was chosen, were all absolutely in direct connection with something in the respective star configuration. Nothing was added or unconscious. Absolutely everything was justified by an extraordinary mutual affinity, manifested between the pyramid and the group of stars that was chosen at the beginning of the construction of that pyramid and which had a precise configuration.

It was a very complicated design, totally executed in the etheric plane. As I said, it started from the level of the inner structure of the pyramid which had gradually appeared in the center of the hologram. It overlapped in a certain way over the star configuration that was chosen, indicating all the areas of correspondence through much data and many symbols. In about the middle of it, at the most important point of energetic influence of the star arrangement, was the space or main room of the pyramid. For example, in the case of the Great Pyramid of Egypt, that space corresponds to the King's Chamber. It was then passed to the secondary rooms, galleries and corridors until the last niche was thus completed.





<https://newsinstact.com/alien/egyptologist-discover-a-sleeping-alien-inside-a-secret-chamber-in-the-great-pyramid/>

ETHERIC PLAN DESIGN AND SPECIFIC STAR RESONANCES

In the holographic images I saw, any structural element of the pyramid appeared as a result of the energy resonance created by the configuration of a specific star which had been established for that pyramid. For example, in the case of the three pyramids on the Giza plateau in Egypt, their dimensions – even if they are in harmony with many specific elements and characteristics of our planet – are designed so as to respect the reports corresponding to the geometrical structure of the stellar configuration at the moment of beginning the actual construction and those corresponding to the dimensions of the main stars of Orion's Belt.

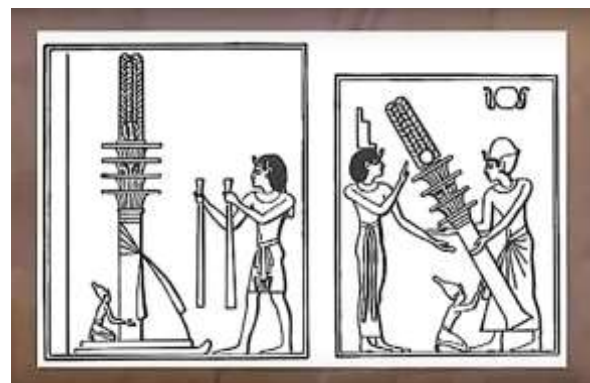
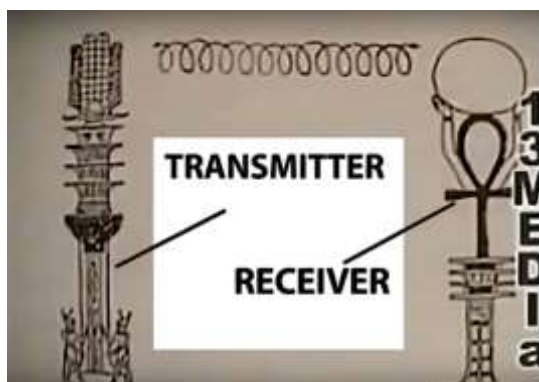
Even this simple fact would be enough to block any attempt of “scientific” explanation of the researchers regarding the construction of the three pyramids because: how could the ancient Egyptians know the diameters of the three main stars of the Belt? This is impossible if you limit yourself to observing the three stars freely which, according to the assumptions of scientists, apparently was the only possibility that the Egyptians had at that time. In such a case, it is obvious that no difference can be made between them. And yet, the three pyramids faithfully and proportionately respect both the dimensions of the three stars of Orion's Belt *** and their relative position within the belt***. In this way, each line and each area of the pyramid was holographically designed in detail on a scale and directly from within the etheric plane. I then telepathically received the information that, practically speaking, designing a large pyramid only in the physical plane is impossible or would be irreparably doomed to

failure because it could not effectively solve and correlate the immensity of data necessary for that construction to be viable and resistant.

The calculations and engineering methods from the physical plane do not allow the pyramid to be designated according to the usual methods. With present formulas, calculation techniques and knowledge, it can only be constructed up to a certain stage beyond which problems cannot be solved. This is because the parameters included in the construction of a pyramid are much more numerous and often unknown to contemporary engineers and scientists. This is why, even if they would like to start designing and carrying out such a huge construction, they would reach technical and even conceptual impossibilities quickly enough, making it impossible to build further.

For example, it would be difficult for many scientists and contemporary engineers to understand that pyramids are actually very important communication centers connected to the specific energy of the stars or human spacecraft that have been chosen to form a certain configuration in order to fulfill a certain purpose, usually of galactic nature.

This is important because **the gigantic mother ships of highly technologically advanced civilizations often have planetary dimensions**, and their missions are sometimes very long lasting, from a few years to several tens of thousands or even hundreds of thousands of years. **Therefore, the pyramids were used exactly as we currently use communication centers, and this involves the transmission and reception of information. As they are cosmic interstellar transmitters designed to perform over very large distances, they also had to be very large and powerful, and that is why the pyramids were used as subtle telepathic transmitters.**



The great Pyramid at Giza is a Wireless Power Plant.

(listen to Bosnian pyramid recordings of the Pyramid of the Sun electromagnetic beam and others)

(footnote)

- This information coincides with the studies of contemporary researchers, such as Robert Bauval who, in his book *The Mystery of Orion*, undoubtedly shows that the three pyramids near Cairo are a faithful replica of the star configuration in Orion's Belt. Bauval writes: "There is a connection between the texts about the pyramid and the pyramid itself, that is, what the text tells us is confirmed by architecture, and I have demonstrated this fact beyond any doubt.
- This corresponds to 2,500 B.C., the period advanced by Egyptologists and modern science for the construction of the Giza pyramid. At that time, the alignment of the three pyramids with the main star of Orion's Belt was no longer valid, but it does correspond to 11,500 B.C.
- The three stars in Orion's Belt are: Alnitak (Zeta), Alnilam (Epsilon) and Mintaka (Delta).

TWENTY-FOUR YEARS

At that time, in the area where today the three great pyramids stand, there was no desert of sand. Basically, the Sahara did not exist at that time. On the contrary, in the place of today's desert, I saw lush vegetation with large rivers which flowed into the Nile.



Teotihuacán – Pyramid of the Sun surrounded by green vegetation

In combination with the “play” of the frequencies, it was telepathically transmitted to me quite clearly that the entire operation of building the

architectural complex near Cairo, including the preparation of the plateau, lasted about twenty-four years. At first, I was a little surprised because I imagined that, given the advanced technology of the Sirians in Orion, the construction of the three pyramids would take much less; but was undoubtedly a simplistic evaluation of mine, made in ignorance of the cause. Additionally, the work did not take place continuously because I saw periods when the site was devoid of the presence of aliens and their ships. Later, in amazement over the way the three pyramids were built, I realized that the work was actually moving at a pretty fast pace during the 24 years; and that, under other conditions, their construction could have lasted hundreds of years if not longer.

As the plateau was uneven and covered with earth, the work began with the proper preparation of the place for construction. **The images showed me a massive deforestation in that area and a leveling of the surface in order to create the solid rock plateau.** There were many ships of different types in the area which stood still in the air at a certain height, all arranged in “layers” or levels. **Some of them prepared the plateau using a technology based upon some type of “beams” that leveled the area. As I saw the operation, the air seemed to ripple beneath the ship passing over a certain area., and after it did so, everything became “flattened”, and not by violent destruction but rather by a kind of rock liquefaction and proper absorption.**

OVERSEAS INVOLMENT IN PYRAMID CONSTRUCTION

An interesting aspect I noticed when looking at those extraordinary images was the relation between the origin of the ships and the extraterrestrial beings. In that context of humanity’s very distant past, talking about their “extraterrestrial” membership was somewhat improper. The ships and their beings were indeed from other planets, but they had been interrelated in our planet for thousands of years and were living with human beings.

They had therefore not come to Earth just for the construction of the three great pyramids in Egypt, but their presence was old, from the times when Atlantis had a great economic and spiritual power and was influential over all of the other continents, and even long before that.

In Egypt, the three pyramids were built mainly by extraterrestrial civilizations descending from the main Sirian civilization in the Sirius A system. In addition to their representatives, I was shown other ships belonging to different civilizations which also contributed to the construction of the pyramids or had attended the operation during certain stages of it. In total, I saw the participation of four different extraterrestrial civilization to which was added the important presence of wise Atlantean beings.

The erection of the pyramids was a “team effort” in the sense that the Atlanteans, with their specific ships, worked with extraterrestrial beings from several civilizations, but the major influence of the Sirian civilizations followed, and as I said, the Great pyramid, as well as the other two smaller pyramids, were built in the Sirian style.

On the site and around it, I saw a swarm of air ships which were extremely well organized and precise. Each ship “knew” exactly what to do and everything seemed to be perfectly calculated and managed. There were, however, very few Atlantean and extraterrestrial beings on the ground. At quite a large distance around the area of construction, I could see some locals, quite primitive human beings of the E-N-K branch, who were just looking at the activity on the site. In some of the images that followed, however, I was able to see some of those natives performing simple activities within the site.

I was very curious to see the real way in which the pyramids were constructed, without going any further between the hypotheses and assumptions that are made. From the beginning, I understood that this was the exclusive work of the ships and of the Atlanteans and extraterrestrial technology based particularly on the energy of crystals. It was not even a question of whether the locals could do something about building the pyramids or having any initiative to do so. In terms of distance, the metaphorical possibility of such was similar to that between our Sun and the star Sirius. From what I saw, the locals were E-N-K beings from one of the lower branches with a primitive level of living. Due to their rudimentary level of living and knowledge such a work would have been absolutely impossible for them to have accomplished in any phase of its realization.

I then fleetingly remembered the vision of contemporary engineers’ archeologists and Egyptologists who seem to have great confidence in the “technical” acumen

of the ancient Egyptians, namely: the chisel, the hammer, the rope, pulleys, logs and some piece of copper. In their view, these were the main tools with which the huge and complex pyramids on the Giza plateau were built. I did not see even one of these tools in the pictures presented to me, but even if the locals had countless such objects, they would have served no purpose. I doubt that those E-N-K beings could have cut at least one stone block out of millions that make up the three pyramids, nor could I see how they could have transported them over such great distances and then assemble them down to millimeters in an extremely complex unit. This is not to mention the construction design, the amazing engineering solutions, nor the dimensions and weight of the stone blocks or many other aspects as well.

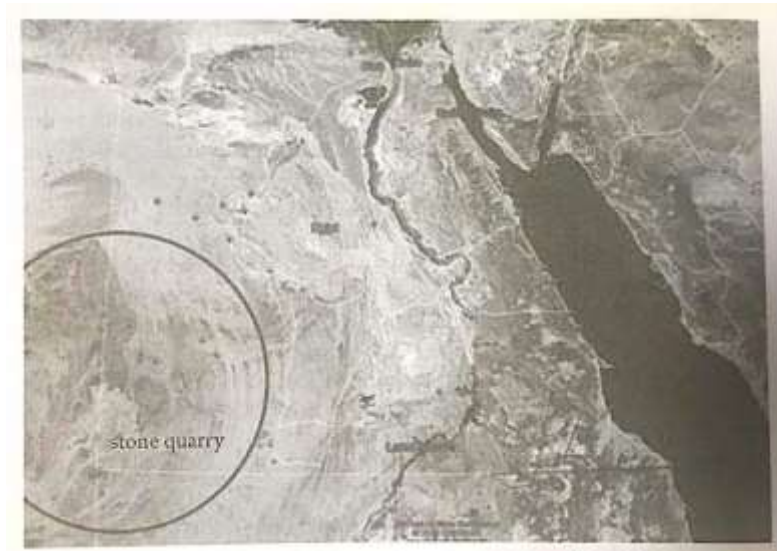
It is true, however, that I saw a few pictures at one point of some native tight inside the site, moving and performing simple operations on some stone blocks. In the storage area, having a few tools and manipulating some thin metal bars or drawing colored signs with straw bundles. I then received the information that these natives were telepathically guided by some of the tall beings on the plateau who were dressed in silver-white and walking slowly between different points of the construction site.

THE CONSTRUCTION OF THE THREE GREAT PYRAMIDS ON THE GIZA PLATEAU

Beyond all of those general elements, I firstly focused on the design of the pyramids. This aspect, which could not be fully understood until today, is attributed to near primitive beings effectively lifting giant stone columns. Seeing the extraordinary complexity of such works in the holographic images presented to me, I was stunned by the lack of discernment and even the logic with which contemporary researchers and renowned Egyptologists argue the “modern version” of how the pyramid complex near Cairo was erected.

I repeat these things over and over again precisely because of my desire to draw attention to the illogics that are perpetuated in the form of “competent” opinions, but what is really sad is that the population considers all of these “academic solutions” as being true. However, they represent only the manifestation of

immense scientific pride and inability to understand and accept something higher than the current level of technological development. To these is added a lamentable indoctrination of the population so that they do not know the truth and thus give unseen wings to the desire for progress and freedom.



As for the actual construction of the three pyramids, the first thing that was shown to me **was the way in which the stone blocks were cut**. In other words, we saw the stone quarry that provided the building material of the three great pyramids. Unexpectedly to me, it was not in the territory of today's Egypt, but further south, in the territory of what is today Libya, not too far from its border.

The image then focused on cylindrical devices which were stuck in the ground at different points of the Persian Gulf 400,000 years ago that were being used by the Sirians for "drilling". It was not clear to me what role they played in that stone quarry, but I still saw the correlation between **the rays of laser-like lights coming out of those cylinders and "lasers" of the "construction ship" floating noiselessly above the mountain**. It was a large ship, impressive by its somewhat irregular appearance which, in fact, gave me the impression of it as a "construction ship" because it had many attachments on its sides. I saw that it was responsible for the vertical sectioning of the stone blocks in the quarry because the stone was extracted vertically from the top of the mountain. The ship was always positioned above another place in the mountain, being guided by its own "lasers"; then vertically sectioning the mountain stone along the four sides of the upper surface through thicker rays of light which were bright white. Thus, the shape of the stone block was

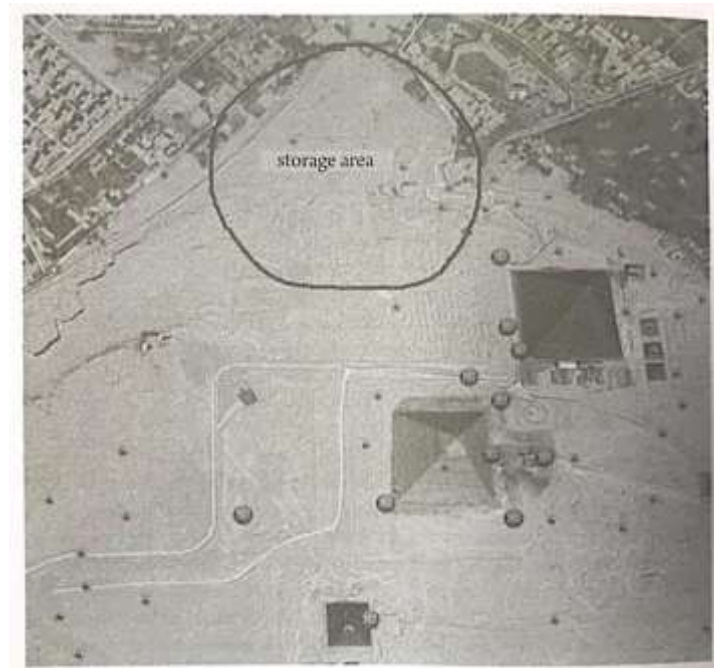
generated, after which the mother ship went to the section of another stone block and another area of the quarry.

After the stone block was thus delimited in the mountain, a transport ship came above it which correlated its movement with that of a sphere-like device resembling an automatic drone. It came through the air near the respective block cut in the mountain, and with the help of “laser” beams that it emitted, sectioned the block both at the top and at its lower part, allowing it to be “caught” and raised to the transport ship through a special force field. Before this, however, I saw that the drone “inscribed” the stone block, always in the bottom right corner. The code was not carved or painted, but I understood that the area in which it was inscribed was energetically activated in such a way that the composition of the stone was modified in that region. It was becoming more structured there, as if it were a neat and luminous crystal. The “code” as such was a rectangle in which several lines and squares were printed, as is the electronic signature nowadays. It would illuminate when a certain ray of light was directed at it, as a kind of specialized “reader”.

The transport vessels were rectangular, and each of them had two symmetrically arranged hemispheres which most likely generated an attraction field that supported the stone blocks below. As I said, when a ship reached over a block of cut stone from the mountain, it was sectioned below, and it was then “trapped” in a specific energy field emanating from the ship. I clearly saw the way this one was done because a diffused beam of white light came out of the two hemispheres which “covered” the stone block. It began to levitate almost immediately, rising up to the bottom of the ship to a short distance from those hemispheres. The ship then sped on an aerial “highway”, transporting the stone block to the site.

If the stone blocks were relatively small in size, a ship would carry two such blocks on one road; but if they were larger, the ship carried only one block. For very large blocks or with special shapes, I saw that, after being cut raw from the mountain, they were transported to an adjacent area where they were finished in a meticulous manner, being brought to the required dimensions by several mobile devices that seemed to be guided automatically.

At a considerable height in the air above the quarry was a much larger ship whose diameter I estimated to be at least 120 meters. Then I receive a telepathic knowing that her role was to oversee and direct the work project. I could see perfect rows of small transport ships which were coming to the quarry and departing with medium-sized stone blocks. The precision and dynamics of the movements of those ships and “drones” was irreproachable. It seemed like a gigantic computer was ordering every operation, both for the flight and steering of the ships as well as for the cutting and lifting of the stone blocks. I also telepathically understood that this was always happening with precise science. When the stone blocks were cut, it was always known exactly where each of them would be placed in the construction of the Great Pyramid. The cut blocks were always those blocks that were waiting to be put in the order that had been established, but as I was to notice, the complete “finishing” took place at the construction site.



I saw two main areas: the storage of the stone blocks and the actual construction. The blocks were taken in a certain order, never by chance. I could say, that not one stone block was the same as any of the others, each having its specific integration in the construction of the pyramid. I did not see, for example, stocks of stone blocks forming a pile. There were, of course, blocks on the ground but not in piles, and the existing ones were immediately taken and integrated into the extremely laborious construction of the pyramid.

COLLABORATION BETWEEN ATLANTIS AND THE EXTRATERRESTRIALS

On the ground I saw tall Atlantean man, dressed in white and resembling a priest, who oversaw the general construction. I could not say how I knew that tall man was an Atlantean, but the information was nonetheless accurate in my mind. I saw two extraterrestrial Sirian beings in the warehouse area whom I recognized because of their white skin, their elongated head towards the back, and their beautiful blue suits with golden signs.

These three seemed to coordinate the general work, but I saw other beings on the perimeter of the site, about ten, carrying out different tasks. Two of them were also Atlantean.

My attention was drawn to the three of those beings who were taller than the others – I estimated that they were more than 2,5 meters high – and wore some kind of whitish-silver slightly translucent color combinations that flowed into a cape-like flair in the back. And on the plateau was a mixture of races, some beings having hair on the head and others not, while the skin of some was darker, even brown, but most of them were white.



One of the drawings on stones found in Mexico, where an extraterrestrial being is seen leading an operation with spaceships

The Atlantean priest and the two Sirian beings who were leading the general work had a monitor in their hands that resembled a large tablet, correlating the various actions that were needed. Absolutely everything under construction was made by the ships in levitation. I could only hear a fine noise, like a hum, but this was probably due to the movement of ships through the air because the sky was filled with their presence.

I realized that those beings, especially the tall ones dressed in white and silver suits, were permanently in telepathic connection either with the general command center, which I could not see, or with the central “brain” coordinating the movements of the ships. At his right temple, the Atlantean priest had a device that appeared as if it were stuck on his long blueish white hair. It was comparable to a Bluetooth of today except that it was larger and more elongated.

Every being and ship out there knew exactly what to do and everything was running with extraordinary precision and perfection. The timing and correlation of all operations was truly impressive. Moreover, in the magnitude and complexity of such construction, I do not know how the activity could have been otherwise so efficient. Even so, as I said, the construction of the entire architectural complex lasted more than two decades.

An important fact to mention is that I did not notice the existence of pilots in small transport vessels. These were fairly simple ships, rectangular in shape but without crew, something similar to today’s drones. I concluded that everything was correlated and guided from a general command center.

ADVANCED TECHNOLOGIES

I was then shown very clearly how the respective stone blocks “came in” to be assembled perfectly in the intended place. The process was entirely technologically based. I saw cylindrical devices on the ground that were like smoky-dark pillars. They were similar to those in the quarry but greater in height, each measuring about five feet high. Each had a hemisphere on the top which made them resemble tall mushrooms to some extent. As far as I was

aware, those cylindrical devices were arranged on a certain path and at certain points, somehow in pairs, forming a kind of “corridor”.

When a stone block was to be moved and recessed into the body of the pyramid two beings from those present on the plateau moved in front of such a cylinder. With only a hand gesture, probably triggering an internal command, the sphere from the top of the cylinder in question began to vibrate imperceptibly, at the same time emitting a specific and non - disturbing high-frequency sound. A ray of light like a laser appeared from the hemisphere, intersecting with the radius emitted by another cylinder. The two “lasers” then scanned the multitude of stone blocks, exactly identifying the block with the code needed to be placed in the pyramid assembly in the exact order established for the construction.

I do not know what that technology was based on, but I could see that the stone blocks actually rose in the air, levitating, and then passing through the rows of cylinders heading towards the pyramid. There they were driven exactly into a certain area of it, rotating in the air until they reached the position where they could be perfectly integrated. I also saw how some of the beings on the ground checked each time how these operations were performed, the pace being precisely sustained. They never spoke, but I felt that there was always an exchange of telepathic messages between them which correlated the different phases of the work.

It started with the Great Pyramid, and I noticed that the development of the construction was not just one-sided but that it was being approached in several regions. As I said, the stone blocks were brought and placed precisely in a predetermined order, creating the feeling of a “living organism” in the construction process. Even though it is a difficult concept to assimilate, this is how I felt when the images were presented to me because, as I said, the holographic technology of Apellos not only facilitates the perception of those times visually but also, to a certain extent, psychically and mentally.

I thus understood that everything had a well-defined meaning in that construction, that each stone having a direct meaning and correlation with a certain cosmic influence, and that nothing was left by chance. If it were not so, how could those magnificent buildings remain “standing” even after more than thirteen millennia? Following the way the pyramids were made, from

conception to their practical construction, I realized once again the immense gap that exists between humanity's current understanding of the laws that govern life and the universe and the ancient advanced civilizations of Earth or the extraterrestrial civilizations that guard us.

For example, I felt a kind of "symbiosis" between each piece that was added to the pyramid and its general assembly. Absolutely every detail of the stone blocks was in correlation with a certain cosmic element which facilitated the continuity of important energy flows towards the pyramid, always in relation to the respective star configuration.

I saw, for example, the exact moment when they cut a certain side of a stone block along a certain precise line with the image then focusing exactly on the embedding of that stone block on one of the edges of the pyramid which, for this purpose, we will call the direction of the line cut at an angle aimed at a star in the Orion Constellation. The image then immediately presented to me, in a separate quadrant in the upper right corner, the sector of the cosmos to which that star belonged to. The same construction principle involved complex geometrical arrangements of the stone blocks and the angles between them were correlated with astral movements and important cosmic configurations, all corresponding in detail to all the stones in the pyramidal ensemble. In their final form, the pyramids were perfectly polished, like very valuable pieces of art.

For contemporary science, such aspects that go beyond the strictly material framework mean nothing because the scientists do not understand their significance. In fact, this is the main reason why it has not yet come out of the "mechanical era" with the same somewhat primitive ideas of propulsion and energy being perpetuated. It is true, however, that there is also a very high-level world elite that has had and continues to have access to much extraterrestrial knowledge which it uses for its personal interest, even on an impressive scale, but I will not develop this topic here.

All of the three main pyramids on the Giza plateau near Cairo were erected at the same time, but the first works were those that targeted the Great Pyramid. Immediately after that, construction began for the other two pyramids. It was a monumental and far-reaching work which, as I said, lasted about twenty-four years. Further south and a little after the construction of the three large

pyramids, smaller ones were erected as well as some temples, but they were all part of the same general project. It was shown that they faithfully respected the correspondence with the stellar arrangement in the cosmos which was chosen to energetically influence this subtle architectural ensemble.

From what I was shown, I saw the construction phase of the Great Pyramid where the base and its corners had already been slightly raised. In the middle of the inside, I noticed a much larger activity. It was a special movement, an activity of another kind because it represented, in a way, the “beginning” of the pyramid; that is to say, its essential structure that was to give it “life” and make it effective.

If the stone blocks from the outside were simpler and somewhat similar, things were different inside, requiring a great deal of attention and great refinement to make the construction extremely complicated. Those blocks were much different from the ones on the outside, although after they were assembled, they seemed to be simply rectangular. In fact, they had different shapes and very precise angles to that they fit into each other perfectly. Each stone block there was practically unique.

I then saw that, in some areas inside the Great Pyramid, another kind of material was used, different from the stone taken from that great quarry. The consistency of those blocks was different. Some of them were black and glossy while others with red inserts were very polished, all of them cut at very different angles and with complex shapes. **As a unique element, I noticed that beneath the King’s Chamber was placed a structure with a round shape with a circumference of “rays” looking similar to a gear wheel. The piece was a very complex assembly. I felt that this mysterious form, like a star with many rays, whose presence is completely unknown to contemporary researchers,** lays a very important role but one which I did not understand. No one imagines that there would be nothing more than massive blocks of stone a little below and between the King’s Chamber and the Queen’s Chamber in the Great Pyramid, but I was clearly shown that this is false and that both that area and many others in the Great Pyramid are actually full of tunnels, small rooms and even larger rooms.

THE FINAL ASPECT OF THE THREE GREAT PYRAMIDS

In their final phase of construction, the pyramids had perfectly smooth faces on the outside, being completely different from what we see today. They were dazzling shining in the sunlight, but as I immediately realized, that glow was favored not only by the shining of the white stone that covered the faces of the pyramids but also by a special substance that was applied over them.

The grandeur of the three pyramids could also be admired at night, being a perfect spectacle, as from another world. At first, only the Great Pyramid was illuminated, but in the images that followed, I saw all three pyramids spreading a fairy light, accompanied by the less intense light emanating from the other secondary constructions around the whole complex. **The splendid images showed me the whole architectural complex from a certain height, the three pyramids being just like real “cosmic headlights”. At the top of each pyramid, I saw a crystal, but the one on the Great Pyramid was huge, like an obelisk with the brightest light.** This, contrary to scientific assumptions and “calculations”, there was never an object of any other form except that huge crystal at the top of the Great Pyramid, and it fulfilled the function of a formidable cosmic ray, both for receiving and transmitting information.

I was then shown an image close to a face of the Great Pyramid and saw that **its brightness was mainly due to a somewhat transparent and somewhat phosphorescent film which covered the entire pyramid. If I were to make a comparison, I would say that the substance resembled a kind of transparent “gel” which was shining brightly. It was not a diffused brightness, but it was something that reflected the light so when you looked at the pyramids, the general impression was that they were made of that substance. Even more so, its structure became somewhat translucent, leaving it to be seen what is inside. The stone blocks were not observed at all, but everything was perfectly polished and covered with that special substance.**

After several thousand years, however, as I could see in the pictures presented to me, the substance has lost its qualities and even started to disappear from certain areas of the pyramid. For example, around 5,200-4,800 B.C., as far as I could see, only the area at the top of the Great Pyramid kept traces of that amazing substance. The crystal, however, was still at the top of the building.

Otherwise, the pyramid had become matte and, to my great surprise, it was buried about half in the sand. The other two smaller pyramids were even more covered with sand. We could also see that the faces of the pyramids were beginning to be “eaten” away by the passage of time and the weather as the stone blocks were being reinforced in many places on the outside. It had, however, been almost 6,000 years since its construction.

SECRET STRUCTURES AND RITUALS INSIDE THE GREAT PYRAMID

Intrigued by the fact that the pyramid was half buried in the sand, I wanted to see other elements related to that upsetting transformation. The images changed, showing me a view from a larger angle, and then, instead of the abundant vegetation and water that existed in the area at the time of the construction of that architectural complex, I saw the sandy desert that was everywhere. **Climate change must have been terrible and quite rapid, but I understood telepathically that it was largely determined by a brief but rather intense war between certain extraterrestrial factions.**

I was then shown “more recent” images of pharaonic palaces and temples built around the pyramidal complex with an obvious growth and evolution of the Egyptian population that abounded in that area. I was shown again the Great Pyramid buried in the sand, but the image somehow penetrated inside the pyramid, through its walls, so that I could simultaneously see both inside and outside. In its interior space, through the galleries and rooms that have not yet been discovered in the physical structure of the pyramid, I saw more human beings doing different jobs and even gaining access, in a way that I did not immediately understand, by moving some blocks of stone in the interior when entering certain hidden areas of the pyramid. Not surprisingly, as I insisted, the image changed, showing me three Egyptians who, after dressing and appearing in their attire, seemed to be of high rank, most likely priests.

They were in a rather large gallery but not in the Great Pyramid Gallery. I was not shown how they got there, but I saw how the older priest stopped at a

certain time near a stone block. He was holding a support in his left palm upon which was a small sphere that shined with a bright yellow light. I saw then how the priest uttered a string of sounds with a special intonation of his voice, modulated and quite strong. I noticed that the sounds produced were “swallowed” by the structure of the pyramid rather than reverberating from the walls. As the priest issued those incantations, I realized that it was necessary to reach a certain frequency in order to trigger a certain process. After a few seconds and while he was still making those sounds, the other two lower-ranking priests lightly pushed a stone block from the floor level with their hands and then another one that was above the priest. Both stones then rotated easily at an angle of about forty-five degrees, the three priests then entered a rather large room.

The image then showed a dynamic and overall view of the pyramids in which we saw much of its structure which is not currently known. There are many other hidden rooms and corridors that are not even suspected by researchers; however, some of these have been identified recently by the improvement of a certain technology, but it is not enough as the data is still too elusive.

(The author probably refers the discovery made in 2015 by the ScanPyramids team made up of an international group of researchers. The team identified a large empty space in the Great Pyramid by the x-ray method, but behind that empty space, one does not know for sure what it might be (a room, several rooms or a gallery) and what is inside it. Even this discovery, however, is called into question by some Egyptologists such as Dr. David Lightbody.)

From what was presented to me; however, I can say that things do not appear as scientists think. For example, all of these numerous rooms, galleries and spaces that are in the pyramid did not have the main purpose of storing things; although, in some of them, as we saw in that extraordinary overview of the internal structures of the Great Pyramid, there are objects, some of them even amazing, but other spaces are empty.

Certain priests and initiates therefore had access to some “keys” to enter the secret spaces of the Great Pyramid. This also happened when we saw many beings inside the pyramid who were mostly workers. By telepathic transmission, I understood that these people were engaged in actions to repair

and maintain the pyramid, probably due to the damage recorded after the war. In parallel, I could see vast work outside to release the pyramid from the burden of the sand that surrounded it. Indeed – this work was done by the native Egyptians, probably at the order of the pharaoh of that period who knew very well that the pyramids represented the legacy of the “gods” and that they had to be treated with the utmost respect.

From the images, however, as a subtle transmission, I felt that these magnificent constructions no longer transmitted the same kind of information than when they had a colossal and profoundly transformative effect. It was as if a kind of “wave of forgetfulness” had seized the minds of people who saw the pyramids only as physical objects, extraordinary in their grandeur, but appreciating them only at this limited level of understanding. Somehow, they had lost over time the ability to understand what the pyramids truly represented and were no longer feeling their subtle extraordinary energetic influence. There had been a “hardening” of their energetic structure and level of consciousness which no longer allowed them to understand the occult elements and higher learning so as to achieve a “resonance bridge” with the energy of the pyramids on the plateau. Therefore, only the priests and initiated retained some of the true knowledge, but even among them, the terrible seals of oblivion had begun to manifest.

I hope you enjoyed this trip into our distant past as much I did.